

Overview

Facility Commander Wnx offers powerful, easy-to-use, IT-friendly, integrated security management under the familiar Microsoft Windows® operating environment. It is a complete end-to-end solution for today's most commonly deployed physical security applications; providing real-time monitoring, command and control, automation, database administration and report management in a single unified system.

Ideally suited for organizations seeking to self-monitor and manage security operations over their IT network infrastructure, Facility Commander Wnx seamlessly integrates access control, photo identification and credentialing, digital video surveillance, alarm monitoring, intrusion detection and visitor management. Through platform standardization and event-driven automation, this powerful solution helps businesses increase security effectiveness, reduce risks and eliminate the hidden costs associated with operating non-integrated security, facilities and business systems.

Facility Commander Wnx is built on Microsoft® technology that makes it easy to implement, operate and support. Open connectivity to its Microsoft SQL Server database with built-in triggers makes it easy to share data securely with HR or other business systems, keeping personnel information and credential status synchronized and up-to-date with all relevant IT infrastructure applications across the enterprise.

Standard Features

Integrated Security Management

- *Seamless integration* – a single-platform and open-application architecture integrates the most common physical security applications and supports many third-party systems
- *Fast, effective response* – event-driven automation minimizes operator intervention and expedites information delivery
- *Reduced costs* – event verification avoids unnecessary and time-consuming followup; common interface style reduces training needs; reuse of existing video infrastructure cuts installation costs; automatic software updates reduce IT involvement

Easy Photo Identification and Credentialing

- Integrated personnel enrollment and management process
- Single database for employees, contractors and visitors
- Capture and display personnel photos and signatures
- Design, print and issue fully customized photo ID cards

Flexible Graphics Monitoring and Control

- Quickly import AutoCAD (.dxf) files to create accurate interactive site maps that display security system activity in real time
- Create and manipulate site map layers to filter out unnecessary information and display clean, uncluttered facility views
- Easily tailor site maps with custom multi-state device icons

Powerful Digital Video Surveillance

- Integrated command and control of IP-deployed video recorders
- User-programmable camera automation and event recording
- Automatic live video pop-up upon alarms
- On-screen pan-tilt-zoom and video playback controls
- Post event ad hoc search queries
- Create auto play evidence CD of recorded event clips
- Video analytics alarms
- Video health monitoring events



Facility Commander™ Wnx

Integrated Security Management
Platform for Windows



Application

Designed as a mission critical application for any size system, Facility Commander™ Wnx is built on the latest Microsoft®.NET technology. Offered in a variety of configurations, Facility Commander Wnx can flexibly adapt to build the most comprehensive system deployment strategies—satisfying the needs of both security and IT departments.

The flexible Facility Commander Wnx architecture can host security devices across any IT infrastructure. It's configurable as a single server system, or with a designated database server, along with one or multiple communications servers for distributed device hosting. Communications servers can be configured for automatic device fail-over to provide tiered redundant paths of communication for hosted devices. These paths ensure system operations—including activity and alarm monitoring, as well as access to video—and continue uninterrupted in the event of network segment outages or computer down time.

Full system administration and operations may be performed from any Facility Commander Wnx database server, designated communication server and client application workstation. For organizations that prefer thin client deployment strategies for

basic application delivery to remote desktops, Facility Commander Wnx can be deployed over Citrix or Microsoft Windows® Terminal Services.

Facility Commander Wnx leverages Microsoft's latest database server replication and cluster services to provide fault tolerance and fully distributed database server architecture. This can be deployed in a manner that achieves the highest levels of availability for maximizing system performance and up time. For an added measure of redundancy, Facility Commander Wnx also offers database replication across multiple servers. This allows the contents of regional database servers geographically located anywhere in the world to be published across all other regional servers—creating a truly distributed, yet unified, system.

A complete line of licensable configurations and software options is offered to meet the security needs of any size organization. Whether needing to secure a small office or a large multi-site enterprise, an organization can avoid unnecessary up-front investment by starting small and easily upgrading capacities and system options as budgets are planned and business needs change.

Integrated Capability Summary*

System

- Logical database partitioning by facility
- SQL Server database Cluster support
- Distributed client device hosting
- Client redundancy device failover
- Operator password aging
- Active Directory password authentication
- Support for multilingual operation
- Multi-time zone support
- Server-distributed auto updates of service packs
- Built-in diagnostics management
- Semi-custom reports; create templates with pre-defined data grouping, sorting and filtering criteria
- M Series controller support
- ACU series controller support
- DES/3DES/AES encrypted controller communications FIPS 197
- DCID 6/9 compliant SCIF area control
- Terminal Services/Thin Client support
- API connectivity for open integration
- Supports Crystal Reports Server 2008

Alarm Management & I/O Control

- Graphic monitoring and control
- 20 priority levels of alarm processing
- User-definable alarm priority color coding
- User-definable individual alarm instructions
- Pre-definable and free-form alarm responses
- Alarm routing and bumping
- E-mail/SMTP alarm notification
- Local and global alarm I/O linking
- Manual and scheduled alarm monitoring and I/O control
- 2-state and 4-state supervised alarm point monitoring
- Continuous tamper supervision of non-monitored alarm points
- Intrusion zone/area arming and disarming
- Keypad duress alarming

Access Control

- Credential and time scheduled access control
- Multiple credentials issuable per person
- Valid access/positive passage validation
- Schedulable reader events for automatically switching between card-only, card-and-keypad, and keypad-only operation, based on desired level of security by time of day
- Access-rights-based intrusion zone/area control arming and disarming
- Automatic photo ID display on access activity
- Elevator control with floor tracking
- Global, timed and privileged APB
- Manual and schedulable mode changes
- Threat-level access modes
- Guard tours

Video Surveillance

- CCTV switcher interface driver support for Interlogix, American Dynamics, Philips/Burle, Pelco, as well as creating custom message profiles
- Digital video surveillance includes Interlogix video drivers, third-party video drivers additionally supported
- Video surveillance enables video command and control functionality system-wide on all client workstations

Intrusion Panel Alarm Monitoring

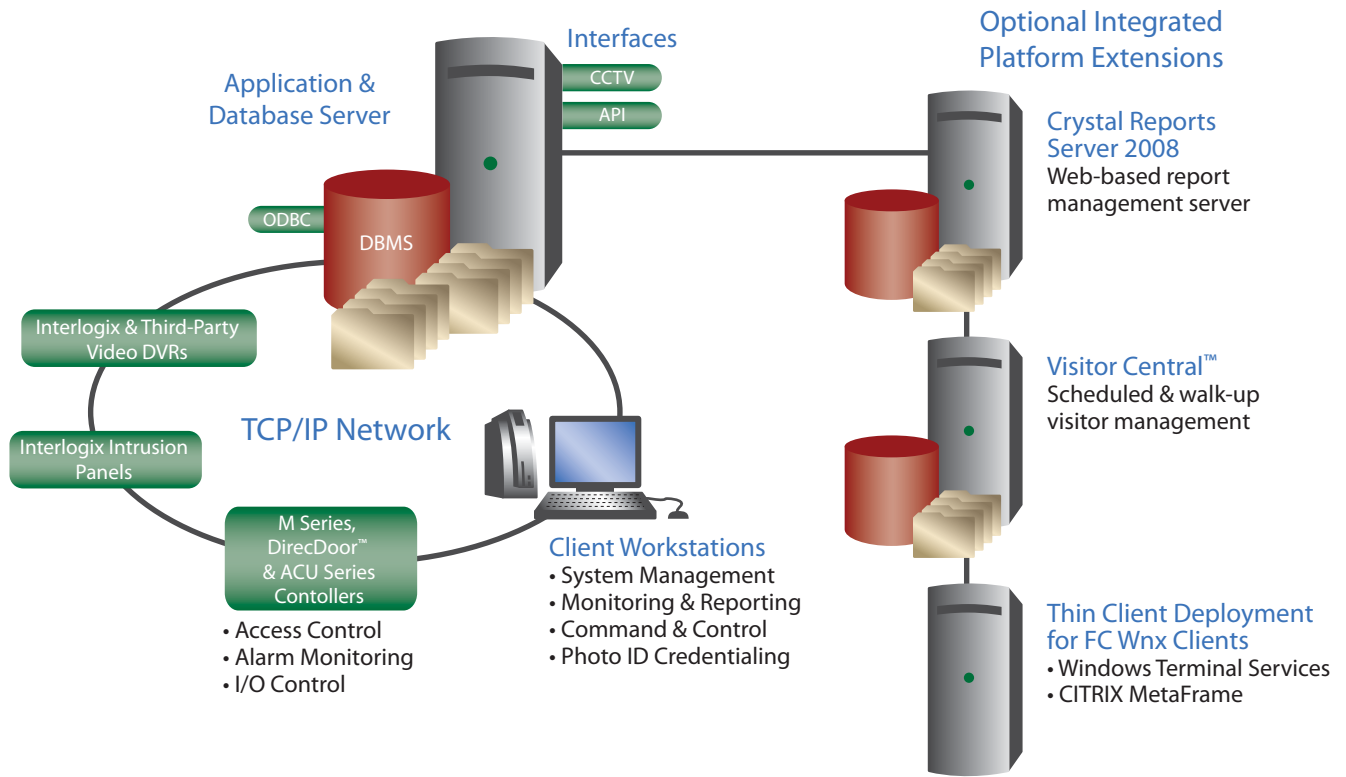
- Optional OH Receiver software emulator
- Supports GE NX590E alarm reporting direct over IP

Personal & Visitor Management

- Photo ID and credentialing streamlines personnel enrollment and card issuance in a single process
- Supports multiple visitor management solutions
- Database interface support for third-party integrations (HR, ERP, Time and Attendance)

*Support for certain features and options may be software-version-specific, and/or controller-specific. Consult specifications for specific information.

Typical Facility Commander™ Wnx Configuration



Configurations & Capacities

System Software	Professional	Enterprise	Global
Server Configuration	Single Server	Single Server	Multi Server
WinXP & Windows® 7 Server & Clients, SQL 2008 Express	✓		
Win2003 Serv, SQL2005 Serv, WinXP Clients		✓	✓
Win2008 Serv, SQL 2008 Serv, Win XP & Windows® 7 Clients		✓	✓
Concurrent Clients	5	100	100 (per server)
Readers	256	4,096	4,096 (per Server)
Alarm/Aux Inputs	2,560	20,480	20,480 (per server)
Alarm/Aux Outputs	2,048	16,384	16,384 (per server)
Cameras	256	4,096	4,096 (per server)
Person/Credentials	25,000	500,000	500,000 (system wide)
Regional Servers	0	0	64
Options			
Client redundancy device failover	Option	Option	Option
Photo ID Credentialing (per client)	Option	Option	Option
Guard Tour	Option	Option	Option
API Connectivity (per instance)	Option	Option	Option
OH Receiver Emulator (Interlogix NX590E over IP)	Option	Option	Option
3rd Party Visitor Management interface	Option	Option	Option

Field Controllers

Facility Commander™ Wnx supports the Lenel series of field controllers for distributed processing of access control, alarm monitoring and I/O control: the M Series, DirecDoor™ and the ACU series. Each controller family offers unique attributes, providing greater choice over other systems limited to single-panel architecture support. The following is a basic summary table to assist in understanding the differing benefits between M Series and ACU Series controller architecture. Facility Commander Wnx must be licensed either for M Series or ACU Series deployment. It cannot be simultaneously licensed for both M and ACU controllers.

Attributes	M Series (includes DirecDoor controllers)	ACU Series Controllers
Network Deployment	M Series and DirecDoor™ controllers, utilizing the PXNplus CPU technology, offer high levels of network flexibility. PXNplus supports static IP, Dynamic DNS, DHCP, and 10/100 Mbps Ethernet support onboard. Optional plug-in modem is available for redundant communications channel.	ACU Series controllers support static IP addressing and have 10 Mbps Ethernet support onboard. Optional plug-in modem is available for redundant communications channel.
Wiring Topology	M Series and DirecDoor controllers are optimum for hub-and-spoke-designed installations; where access control readers, alarm points and I/O control points are wired back centrally to each controller in a star configuration.	ACU Series controllers are optimum for distributed RS485 bus architectures; where access control readers, alarm points, and I/O control points are wired to remote interface modules. Additionally, up to four controllers can be multi-dropped on a single line via RS485 communications.
Reader Interfaces	M Series and DirecDoor controllers support the Lenel-supervised F/2F protocol over 22AWG 2-pair twisted shielded or unshielded cabling up to 2,000 ft. reader/door junction interfaces for achieving extended distances with minimal wiring.	ACU Series controllers support the traditional Wiegand standard for wiring reader and door control devices to native onboard reader ports or Remote Reader Electronics (RRE) modules distributed over RS485.
SCIFs*	M Series and DirecDoor controllers support card-based reader keypad arming and disarming of intrusion zones. The Interlogix NX590E intrusion panel and peripherals can be additionally combined based on required level of SCIF operation.	The ACU Series controllers and IKE keypad display modules make an excellent solution for SCIF and meet requirements of FIPS 197.

*Sensitive Compartmented Information Facilities

Platform Requirements

Minimum	Pro Server	Client	Enterprise Server	Global Regional
RAM	2 GB	2 GB	4 GB	8 GB
HD Available Space	10 GB	1 GB	80 GB	80 GB
Processor	Xeon 2 GHz			
Optical Drive	DVD ROM drive			
Network Card	10/100 Mb			
Display	1024 x 768 16-bit color			

Minimum computer specifications may not provide optimal performance for all system configurations. Increasing CPU, RAM and network card capacities will increase performance and may be required for some customers' deployments. Please consult with your sales person or Sales Engineering to properly configure your application servers, communication servers, media servers and clients to optimize performance for your specific configuration.

Compliance

UL 1076 Security	Listed
FIPS 201 PIV-I	FASC-N Support FIPS 197

Ordering Information*

Facility Commander™ Wnx offers a complete line of licensable configurations and software options to meet the security needs of any size organization. Whether needing to secure a small office or a large multi-site enterprise, an organization can avoid unnecessary investment up front by starting small and easily upgrading capacities and system options as budgets are planned and business needs change.**

Facility Commander Wnx v7.x Pro Server Software	
WX70PRO-16CAPMIC	FCWnx v7.x Pro single-server software license package (1) server client, (1) remote client, (16) readers w/GE Micro driver, (16) cameras w/GE video drivers
WX70PRO-16CAPACU	FCWnx v7.x Pro single-server software license package (1) server client, (1) remote client, (16) readers w/GE ACU driver, (16) cameras w/GE video drivers
WX70PRO-ID32MIC	FCWnx v7.x Pro ID32 single-server software license package (1) server client, (2) Photo ID Option, (32) readers w/GE Micro driver, (32) cameras w/GE
WX70PRO-ID32ACU	FCWnx v7.x Pro ID32 single-server software license package (1) server client, (2) Photo ID Option, (32) readers w/GE ACU driver, (32) cameras w/GE
Facility Commander Wnx v7.x Enterprise Server Software	
WX70ENT-16CAPMIC	FCWnx v7.x Enterprise single-server software license package (1) server client, (1) remote client, (16) readers w/GE Micro driver, (16) cameras w/GE video drivers
WX70ENT-16CAPACU	FCWnx v7.x Enterprise single-server software license package (1) server client, (1) remote client, (16) readers w/GE ACU driver, (16) cameras w/GE video drivers
Facility Commander Wnx v7.x Global Server Software	
WX70REG-16CAPMIC	FCWnx v7.x Regional single-server software license package (1) server client, (1) remote client, (16) readers w/GE Micro driver, (16) cameras w/GE video drivers
WX70REG-16CAPACU	FCWnx v7.x Regional single-server software license package (1) server client, (1) remote client, (16) readers w/GE ACU driver, (16) cameras w/GE video drivers
WX70GLB-02REGION	FCWnx v7.x Global multi-server software license package (1) server client, (1) remote client, capacity license for supporting (2) regional server systems
WX70GLB-16REGION	FCWnx v7.x Global multi-server software license package (1) server client, (1) remote client, capacity license for supporting (16) regional server systems
WX70GLB-32REGION	FCWnx v7.x Global multi-server software license package (1) server client, (1) remote client, capacity license for supporting (32) regional server systems
WX70GLB-64REGION	FCWnx v7.x Global multi-server software license package (1) server client, (1) remote client, capacity license for supporting (64) regional server systems
Facility Commander Wnx System Software Options	
WXSWOPT-001CLNT	FCWnx Additional single client license (5 remote client maximum on Professional)
WXSWOPT-PHOTOID	FCWnx Integrated Photo ID Credentialing, add-on option per client
WXSWOPT-GUARDTR	FCWnx Guard Tour, add-on option per server
WXSWOPT-001CLNT	FCWnx Additional single client license
WXSWOPT-CLNTRED	FCWnx Client redundancy for device hosting with communications failover, add-on option per server
WXSWOPT-OHRECEM	FCWnx OH receiver emulator for GE NX590E intrusion alarm monitoring direct over IP, add-on option per instance
WXSWOPT-001APIC	FCWnx API connectivity, add-on option per instance
WXSWOPT-VISITDB	FCWnx 3rd party Visitor Management DB interface add-on option per server, PassagePoint & CI-3 (version-specific support dependency may apply)
WXSWOPT-VSC	FCWnx Integration with VSC 4.4, add-on option per server

WXDRIVR-INTEGRAL	FCWnx 3rd party Digital Video Recorder driver add-on option per server, Integral Technologies DVXi, DVXe, DSXpress (version-specific support dependency may apply)
WXDRIVR-PELDCDX8K	FCWnx 3rd party Digital Video Recorder driver add-on option per server, Pelco DX8000 (version-specific support dependency may apply)
WXDRIVR-PANAHD5K	FCWnx 3rd party Digital Video Recorder driver add-on option per server, Panasonic HD500 (version-specific support dependency may apply)
WXDRIVR-NICEVPHY	FCWnx 3rd party Digital Video Recorder driver add-on option per server, NiceVision Pro and Harmony (version-specific support dependency may apply)
WXDRIVR-ADINTELX	FCWnx 3rd party Digital Video Recorder driver add-on option per server, American Dynamics Intellex (version-specific support dependency may apply)
WXDRIVR-DWDPRO9K	FCWnx 3rd party Digital Video Recorder driver add-on option per server, Digital Watchdog Pro9000 (version-specific support dependency may apply)

Facility Commander Wnx System Software Capacities for New Systems	
WXRDRLIC-0032CAP	FCWnx new system Reader capacity license, 16 to 32 readers per server
WXRDRLIC-0064CAP	FCWnx new system Reader capacity license, 16 to 64 readers per server
WXRDRLIC-0128CAP	FCWnx new system Reader capacity license, 16 to 128 readers per server
WXRDRLIC-0256CAP	FCWnx new system Reader capacity license, 16 to 256 readers per server
WXRDRLIC-0512CAP	FCWnx new system Reader capacity license, 16 to 512 readers per server (Enterprise & Global Only)
WXRDRLIC-1024CAP	FCWnx new system Reader capacity license, 16 to 1024 readers per server (Enterprise & Global Only)
WXRDRLIC-2048CAP	FCWnx new system Reader capacity license, 16 to 2048 readers per server (Enterprise & Global Only)
WXRDRLIC-4096CAP	FCWnx new system Reader capacity license, 16 to 4096 readers per server (Enterprise & Global Only)
WXCAMLIC-0032CAP	FCWnx new system Camera capacity license, 16 to 32 cameras per server
WXCAMLIC-0064CAP	FCWnx new system Camera capacity license, 16 to 64 cameras per server
WXCAMLIC-0128CAP	FCWnx new system Camera capacity license, 16 to 128 cameras per server
WXCAMLIC-0256CAP	FCWnx new system Camera capacity license, 16 to 256 cameras per server
WXCAMLIC-0512CAP	FCWnx new system Camera capacity license, 16 to 512 cameras per server (Enterprise & Global Only)
WXCAMLIC-1024CAP	FCWnx new system Camera capacity license, 16 to 1024 cameras per server (Enterprise & Global Only)
WXCAMLIC-2048CAP	FCWnx new system Camera capacity license, 16 to 2048 cameras per server (Enterprise & Global Only)
WXCAMLIC-4096CAP	FCWnx new system Camera capacity license, 16 to 4096 cameras per server (Enterprise & Global Only)

Facility Commander Wnx Software Media	
WX70ENG-SWMEDIA	FCWnx v7.x Unlicensed software media package (English)—for product evaluations and media replacement

*Support for certain features and options may be software-version-specific and/or controller-specific. Consult specifications for specific information.

**Consult your Lenel sales representative for additional ordering options and/or updates.

North America
T 888-437-3287

Asia
T 852-2907-8108
F 852-2142-5063

Australia
T 61-3-9239-1200
F 61-3-9239-1299

Canada
T 800-267-6317
F 613-737-5517

Europe
T 32-2-725-11-20
F 32-2-721-40-47

Latin America
T 561-998-6100
F 561-994-6572

utcfssecurityproducts.com

Specifications subject to change without notice.

© 2011 Lenel Systems International, Inc.
All rights reserved.

ISO 9001: 2000-Certified Process