

GE Security

State-of-the-art data bus devices **AL-1330, AL-1740, AL-1741, and AL-1743** fine-tune the Alliance system, connecting panels and accessories together.

The AL-1330 data/power distribution module provides a simple means of star-connecting the Alliance control panel to its LAN devices. It keeps wiring in place and easily traceable to the source. An indicator LED for power OK is included.

The AL-1740 data bus isolator/repeater electrically isolates the RS-485 data bus where voltage differentials may exist and extends the bus maximum length from 5,000 feet to 20,000 feet (four units by 5,000 feet). The AL-1740 also allows retrofit of existing installations with Alliance control panels and accessories.

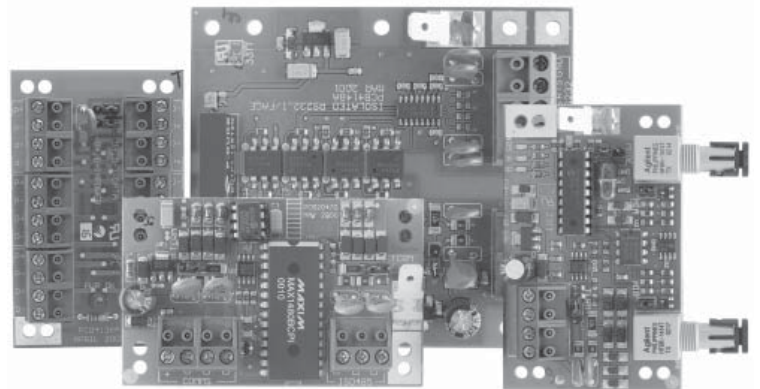
The AL-1741 RS-232 to RS-485 interface module converts a standard RS-232 bus to the RS-485 data bus, allowing a PC to be connected up to 5,000 feet (1,500 m) away from the AL-4x17 control panel. The interface enables extension of the Alliance system data bus through a leased line and two modems.

The AL-1743 data bus-to-fiber optic module converts the Alliance system bus to work with a fiber optic network. It allows either multidropped connection when using a single optical fiber or point-to-point connection when using two fibers.

Features

- Retrofit existing installations with communications interfaces
- Extend Alliance system through connection of panels and accessories
- Add fiber optic network through AL-1743

AL-1330/174x RS-485 data bus accessories





Specifications

Americas

503-885-5700
888-GE-SECURITY
(437-3287)
faxback 800-483-2495
info@gesecurity.com
www.gesecurity.com

Asia

tel 852-2907-8108
fax 852-2142-5063

Australia

tel 61-3-9259-4700
fax 61-3-9259-4799

Europe

tel 32-2-725-11-20
fax 32-2-721-86-13

Latin America

tel 305-593-4301
fax 305-267-4300

AL-1330

- Supply voltage: 9 to 14 VDC
- Dimensions: 3.5 x 3.1 in. (89 x 79 mm)
- Operating temperature: 32 to 122°F (0 to 50°C)

AL-1740

- Supply voltage: 9 to 14 VDC
- Operating current: 90 mA
- Isolation voltage: 1,500 V
- Maximum distance from panel: 5,000 ft. (1,500 m)
- Dimensions: 3.5 x 3.1 in. (89 x 79 mm)
- Operating temperature: 32 to 122°F (0 to 50°C)

AL-1741

- Supply voltage: 9 to 14 VDC
- Operating current: 100 mA
- Maximum distance from panel: 5,000 ft. (1,500 m)
- Dimensions: 3.5 x 3.1 in. (89 x 79 mm)
- Operating temperature: 32 to 122°F (0 to 50°C)

AL-1743

- Supply voltage: 9 to 14 VDC
- Operating current: 60 mA
- Maximum distance from panel: 5,000 ft. (1,500 m)
- Dimensions: 3.5 x 3.1 in. (89 x 79 mm)
- Operating temperature: 32 to 122°F (0 to 50°C)
- Mode: Multimode
- Fiber size: 62.5 / 125 micrometer
- Wavelength: 820 nm wavelength technology
- Distance: Up to 1.68 mi. (2.7 km)

Ordering information

AL-1330	Data/power distribution module
AL-1740	Data bus isolator/repeater
AL-1741	RS-232 to RS-485 interface module
AL-1743	Data bus to fiber optic module