

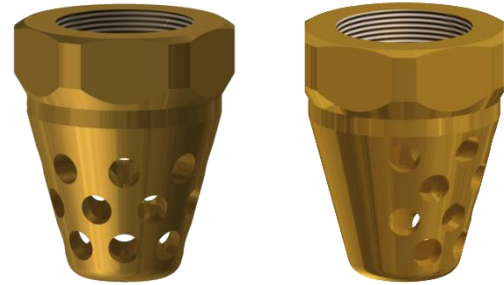
SF 1230™ ENGINEERED DISCHARGE NOZZLES

Description

The discharge nozzles are made of brass and are available in a 180° and 360° discharge patterns. The nozzles are designed to control the agent flow and to distribute the agent throughout the protected enclosure in a uniform, predetermined pattern and concentration.

Six sizes of discharge nozzles are available, 1/2" (15 mm) through 2" (50 mm). The size refers to the size of schedule 40 or 80 pipe that the nozzle can be connected to. Each nozzle has NPT female threads for connection to the pipe network.

When ordering nozzles, orifice size must be specified. The nozzle orifice area is determined by performing a hydraulic calculation using the Fike Engineered Flow Calculation program. Nozzle(s) should not be ordered until the clean agent system pipe network is installed and an "As Built" hydraulic calculation is performed. Nozzle orifice drilling must be done at Fike factory, or at a UL listed nozzle drill station.



360° Nozzle

180° Nozzle

Ordering

| PART NUMBER | DESCRIPTION |
|-----------------|----------------------------|
| 80-124-50-XXXX | 1/2" (15 mm) 360° nozzle |
| 80-124-75-XXXX | 3/4" (20 mm) 360° nozzle |
| 80-124-100-XXXX | 1" (25 mm) 360° nozzle |
| 80-124-125-XXXX | 1 1/4" (32 mm) 360° nozzle |
| 80-124-150-XXXX | 1 1/2" (40 mm) 360° nozzle |
| 80-124-200-XXXX | 2" (50 mm) 360° nozzle |
| 80-122-50-XXXX | 1/2" (15 mm) 180° nozzle |
| 80-122-75-XXXX | 3/4" (20 mm) 180° nozzle |
| 80-122-100-XXXX | 1" (25 mm) 180° nozzle |
| 80-122-125-XXXX | 1 1/4" (32 mm) 180° nozzle |
| 80-122-150-XXXX | 1 1/2" (40 mm) 180° nozzle |
| 80-122-200-XXXX | 2" (50 mm) 180° nozzle |

Note: -XXXX in part number is the orifice code designation.

Approvals

- Underwriters Laboratories (UL)
- Underwriters Laboratories of Canada (ULC)
- Factory Mutual (FM)

For exact certification listings, please reference the respective agency web site.

Contact Information

Fike Corporation – Global Headquarters
704 SW 10th Street
Blue Springs, MO 64015
Telephone: +1-816-229-3405
www.fike.com/contact-us for global offices