

## Product Overview

The End of Line (EOL) comes complete with a pressure gauge to allow for easy system status reporting. The device is designed to only be used in conjunction with Reacton® detection tube. It is to be used to terminate the detection tube route and allow for initial charging, commissioning, and system pressure checks. All devices have an internal Schrader valve that allow for the safe removal of gauges and charging adaptors.

## Key Features

- High Grade Stainless Steel Material
- 100% Non-Destructive Tested at 20 Bar.
- Pressure indicator as standard.
- High Reliable Schrader Valve Core
- Can be used together with the Reacton® Charging Adaptor.

## Common Applications

- Heavy Duty Mobile Vehicles
- Buses and Coaches
- Power Generators
- Server Cabinets
- Wind Turbines
- Sports Racing Cars or Boats
- Commercial Boats & Yachts

## Reacton Cylinder Compatibility

- Dry Powder
- Wet Chemical
- Clean Agent
- Water
- Inert Gas

## Mechanical Data

<b>Material:</b>	Standard: Stainless Steel Alloy 1.4305
<b>Finish:</b>	Machined Stainless Steel
<b>Marking:</b>	Part Number; Lot Number; Year
<b>Weight:</b>	0.16kg
<b>Electrical Connections:</b>	N/A
<b>Mechanical Connections:</b>	M10 x 1 (Pressure Gauge) 1/8" BSPP (Push-in Fitting, Elbow, Tee) M16 x 1.5 (Bulkhead)

## Functional & Environmental Data

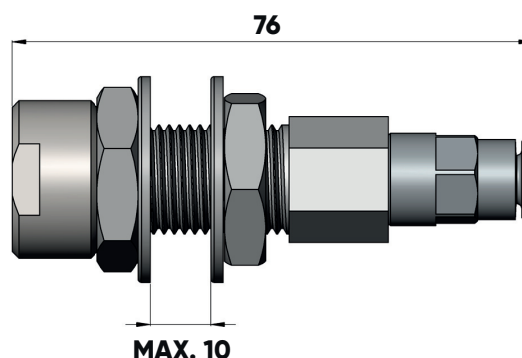
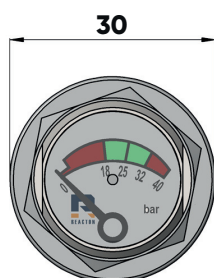
<b>Operating Pressure:</b>	15.0 or 25.0 barg @ 20°C [217.5 or 362.6 psig @ 68°F]
<b>Operating Temperature:</b>	-40°C* to +60°C [-40°F* to + 140°F]
<b>Operation Cycles:</b>	100**
<b>Life Cycle:</b>	10 Years

\*Only Valid in conjunction with Dry Powder or Inert Gases

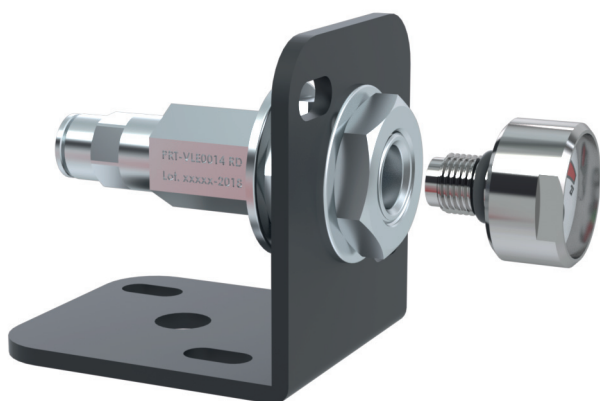
\*\*Only Valid with Indirect system configurations, if used with Direct Dry Powder systems it is recommended that it is thoroughly checked after each discharge.

## Part Numbers

<b>RE7243</b>	End of Line (EOL): 4/6mm Tube
<b>RE7244</b>	End of Line (EOL): 6/8mm Tube

**Dimensions**

\*All dimensions in mm. The configuration shown in the above Figure is standard.

**Principle of Operation / Purpose of use**

The End of Line (EOL) with Gauge is used when a termination of the detection line is required. It comes with a standard straight fitting that it be changed to a tee or an elbow fitting to suit other application needs. The Pressure Indicator is removable to allow for correct charging and maintenance. The EOL is an essential component for the system for pressure monitoring, maintenance and commissioning.

**Design Considerations**

Please read the Reacton® installation manual. Individual EOL drawings are available and specific installation guidelines can be found in the related manuals.

**Compatibility List**

Reacton® CT Direct Systems  
Reacton® CTX Indirect Systems

**Warranty Validity & Precautions**

The warranty is invalidated if the system or part is used under conditions other than those indicated in this datasheet or/and the product has been custom modified.

Stresses above the maximum limits indicated may cause permanent damage to the part or system. Exposure to absolute maximum rating conditions for extended periods may affect reliability that could compromise the system integrity and lead to loss of asset, serious injury or death.

Whilst Reacton® has taken care to ensure the accuracy of the information contained herein it accepts no responsibility for the consequences of any use thereof and reserves the right to change the specification of goods without notice.