

REACTON ACCESSORIES

IN-CAB FASCIA - RE7167, RE7162, RE7167-BUS

COMPONENT DATASHEET

Page | 1



Product Overview

The In-Cab Fascia has been designed by Reacton® Fire Suppression Ltd for the demanding application of the Heavy Mobile Machinery and tailored to the needs of our customers. It can be used together with the Reacton® Junction Box to manually actuate the CTX™ Indirect System and monitor the status of the all the fire suppression systems sold by Reacton®.

Key Features

- IP65 Rated Enclosure and Components
- Robust Screw In Terminal Block
- Can be mounted Horizontal or on Cabin Panel
- Sounder with Detachable Magnetic Key
- Two keys supplied as standard
- Fire, Service, Power Indicators
- Can be custom branded for high volumes
- Lockable Actuation Push Button
- Illuminated Anti-Vandal Push Button
- Two Options Available with or without Electrical Actuation

Common Applications

- Heavy Duty Mobile Vehicles
- Buses and Coaches
- Ground Support Equipment
- Sports Racing Cars or Boats
- Commercial Boats & Yachts

Reacton Cylinder Compatibility

- Dry Powder
- Wet Chemical
- Clean Agent
- Water
- Inert Gas



Mechanical Data

Material:	Body: Powder Coated Mild Steel Face Plate: Polycarbonate Overlay with Fiber Reinforced Resin Key Switch: Magnetic/Plastic Button: Plastic/Galvanised Steel LED's: Plastic
Finish:	Mainly Matt Black with nickel details
Marking:	Reacton In-cab Fascia Label Custom options based on volume
Weight:	~0.500 kgs
Electrical Connections:	Screw In Terminal Block 5 Positions
Mechanical Connections:	Two M3.5 x 12mm Black Screws

Functional & Environmental Data

	Min	Typical	Max
Operating Voltage:	10VDC	24VDC	27VDC
Power Consumption: (RE7167-BUS)	10mA	12mA	30mA all "ON"
Power Consumption: (RE7167)	12mA	20mA	35mA all "ON" +1.1A with Solenoid
Sounder Frequency:		3.5 KHz	
Sound Pressure Level:	-	82dB @ 30cm/12V	102dB @ 30cm/24V
Operating Temperature:		-20°C to +60°C [-4°F to + 140°F]	
Operation Cycles:		Button ~10000 operating cycles	
Life Cycle:		10 Years	
Actuation Response Time:		Maximum of 2 seconds with 30m of 6/4 Detection Tube	

Doc Number: DOC-COM0019 Rev.C

Released Date: 18 February 2022

Reacton Fire Suppression Ltd

14 Baynes Place, Waterhouse Business Park, Chelmsford Essex, CM1 2GX, U.K

T: 0800 030 6526 E: info@reactonfire.com

W: www.reactonfire.com

REACTON
FIRE SUPPRESSION

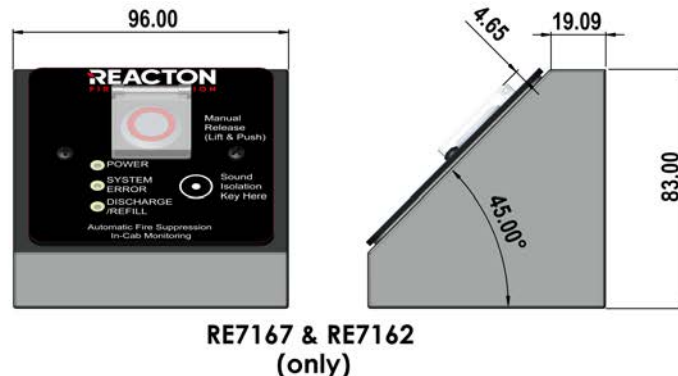
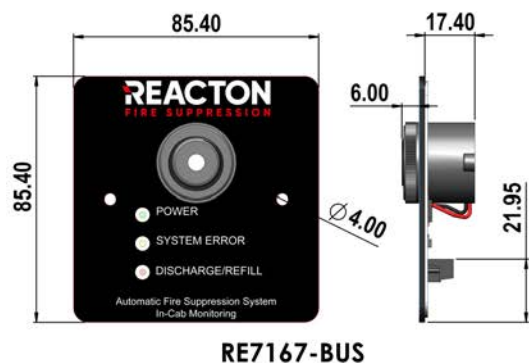
REACTON ACCESSORIES

IN-CAB FASCIA - RE7167, RE7162, RE7167-BUS

COMPONENT DATASHEET

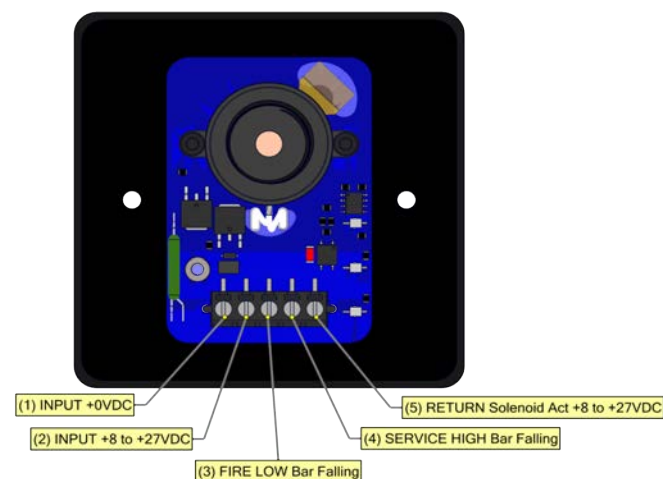
Page | 2

Dimensions



*All dimensions in mm, standard tolerance +/- 0.5mm linear. The configuration shown in the above figure is standard for the related products. The colours and materials can vary from real life, the illustration is for reference of the dimensions only and not to be used for manufacturing

Principle of Operation / Purpose of use



The In-Cab Fascia is used in connection with the In-Cab Junction Box and is specifically design for the demanding application of the Heavy Mobile Machinery. The In-Cab Fascia can be used also in situations where a sounder and physical indication of the status of the fire suppression system is required. The push button is connected to a manual release venting solution where the CTX™ Indirect System can be manually actuated.

Design Considerations

Please check In-Cab Monitoring Installation Manual - DOC-USM0004 for additional designing and installation information.

Compatibility List

Reacton® In-Cab Junction Box RE7318 or RE7163
Reacton® CTX Indirect Systems

Recommended Cabling from Fascia to NEW RE7318-nn-xx Junction Box

RE7334-2

In-Cab Fascia Cable - M12, 12Pins, 10m PUR Insulation, (optional with Koppex), 1.5A Max



Fascia	Cable Side (RE7334-2)
1	BLUE - Power to Fascia (-) Negative 0VDC
2	BROWN -Power to Fascia Positive +12 to +24VDC
3	GREEN - Fire Warning [GND/0VDC LOGIC]
4	WHITE - Service Warning [GND/0VDC LOGIC]
5	GRAY - Solenoid Return Positive [+VDC LOGIC]

Recommended Cabling from Fascia to old RE7163-xx-xx Junction Box

RE6500-5

Automotive Cable - 5 Core, 30m PVC Insulation, (optional with Koppex), 16A Max



Fascia	Cable Side (RE6500-5)
1	WHITE - Power to Fascia (-) Negative 0VDC
2	BROWN -Power to Fascia Positive +12 to +24VDC
3	GREEN - Fire Warning [GND/0VDC LOGIC]
4	YELLOW - Service Warning [GND/0VDC LOGIC]
5	RED - Solenoid Return Positive [+VDC LOGIC]

Doc Number: DOC-COM0019 Rev.C

Released Date: 18 February 2022

Reacton Fire Suppression Ltd

14 Baynes Place, Waterhouse Business Park, Chelmsford Essex, CM1 2GX, U.K

T: 0800 030 6526 E: info@reactonfire.com

W: www.reactonfire.com

REACTON
FIRE SUPPRESSION

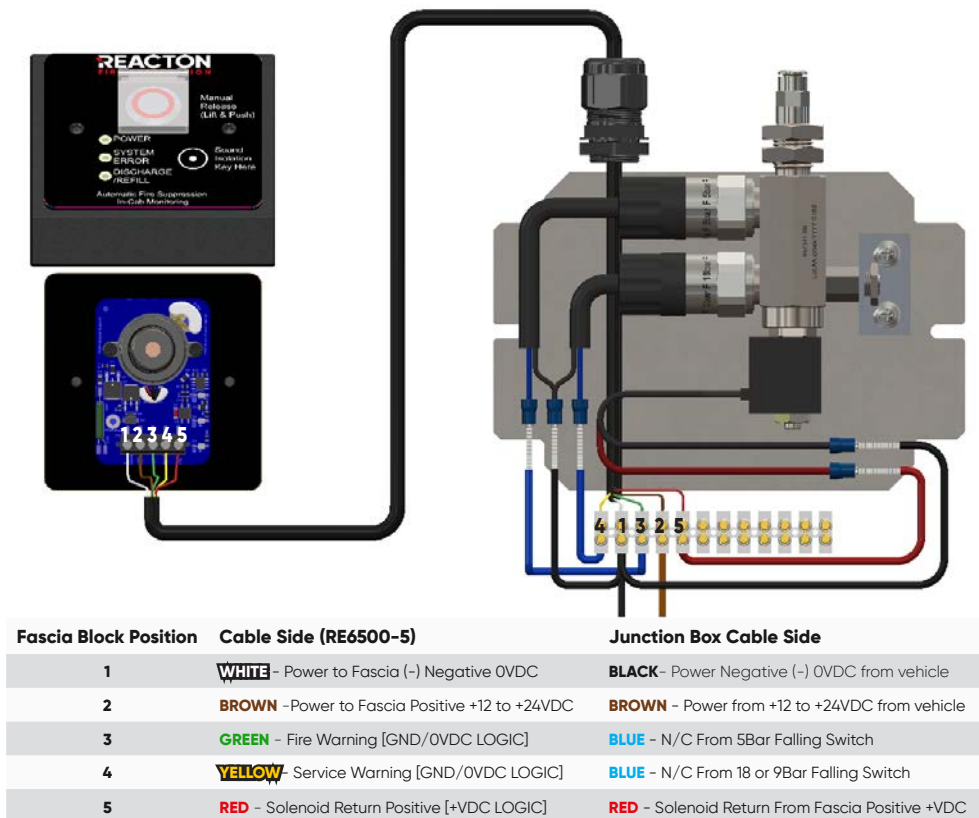
REACTION ACCESSORIES

IN-CAB FASCIA - RE7167, RE7162, RE7167-BUS

COMPONENT DATASHEET

Page | 3

Wiring Diagram for the Legacy Support for RE7163-xx-xx



Wiring Diagram for the NEW Junction Box RE7318-nn-xx (BASIC, STANDARD, ADVANCE)



Fascia Block Position	Cable Side RE7334-3
1	BLUE - Power to Fascia (-) Negative 0VDC
2	BROWN - Power to Fascia Positive +12 to +24VDC
3	GREEN - Fire Warning [GND/0VDC LOGIC]
4	WHITE - Service Warning [GND/0VDC LOGIC]
5	GRAY - Solenoid Return Positive [+VDC LOGIC]

Doc Number: DOC-COM0019 Rev.C

Released Date: 18 February 2022

Reaction Fire Suppression Ltd

14 Baynes Place, Waterhouse Business Park, Chelmsford Essex, CM1 2GX, U.K

T: 0800 030 6526 E: info@reactionfire.com

W: www.reactionfire.com

REACTION
FIRE SUPPRESSION

REACTION ACCESSORIES

IN-CAB FASCIA - RE7167, RE7162, RE7167-BUS

COMPONENT DATASHEET

Page | 4

Associated Component List

RE7162-KEY

Detachable Magnetic Key with Ring



RE7334-2

M12, 12Pins, 10m PUR Insulation, 1.5A Max



RE6500

2-Core Flat Automotive Cable



RE6500-5

5-Core Automotive Cable



Project Variations and Ordering Codes

Ordering Part Numbers (Please note cabling & wiring must be ordered separately)

Part Number	Description and key features
RE7162	Branding FIREWARD Fascia including black enclosure, an anti-vandal illuminated push button, a plastic transparent cover, a magnetic sounder isolation key.
RE7167	Branding REACTION Fascia including black enclosure, an anti-vandal illuminated push button, a plastic transparent cover, a magnetic sounder isolation key.
RE7167-BUS	Branding REACTION Fascia no enclosure, no push button, no sounder isolation key.

Warranty Validity & Precautions

The warranty is invalidated if the system or part is used under conditions other than those indicated in this datasheet or/and the product has been custom modified.

Stresses above the maximum limits indicated may cause permanent damage to the part or system. Exposure to absolute maximum rating conditions for extended periods may affect reliability that could compromise the system integrity and lead to loss of asset, serious injury or death.

Whilst Reaction® has taken care to ensure the accuracy of the information contained herein it accepts no responsibility for the consequences of any use thereof and reserves the right to change the specification of goods without notice.

Doc Number: DOC-COM0019 Rev.C

Released Date: 18 February 2022

Reaction Fire Suppression Ltd

14 Baynes Place, Waterhouse Business Park, Chelmsford Essex, CM1 2GX, U.K

T: 0800 030 6526 E: info@reactionfire.com

W: www.reactionfire.com

REACTION
FIRE SUPPRESSION