



Product Overview

The Reacton® Branded Flexible 3/8" Hoses are designed to provide the optimised performance when they are used in-conjunction with CTX™ Indirect Systems. The hoses are double braided and can endure high amount of impact power as well as keep the same discharge performance in high temperatures or in the event of a fire.

Key Features

- Standard 3/8" Fittings
- Variety of Sizes available from 0.25m – 3m lengths
- Universal 60° Cone Seal to BS 5200
- Oil Resistant
- Zinc Plated Steel Fittings
- Straight to Straight and Straight to Elbow options available in all assorted sizes as standard

Common Applications

- Heavy Duty Mobile Vehicles
- Buses and Coaches
- Power Generators
- Server Cabinets
- Wind Turbines
- Sports Racing Cars or Boats
- Commercial Boats & Yachts

Reacton Cylinder Compatibility

- Dry Powder
- Wet Chemical
- Clean Agent
- Water
- Inert Gas



Mechanical Data

| | |
|--------------------------------|---|
| Material: | Inner Tuber: Synthetic rubber Reinforcement: 2 Single Wire Braids Outer Cover: Synthetic Rubber, Oil and Weather Resistant End Fittings: Zinc Plated Steel |
| Finish: | Plain Black |
| Marking: | Logo; Working Pressure |
| Weight: | 0.54kg/m |
| Electrical Connections: | N/A |
| Mechanical Connections: | 3/8"BSP 60° Cone Seat to BS5200 |

Functional & Environmental Data

| | |
|-------------------------------|--|
| Operating Pressure: | 15.0 or 25.0 barg @ 20°C [217.5 or 362.6 psig @ 68°F] |
| Pulse Pressure: | 660bar |
| Burst Pressure: | 1320bar |
| Operating Temperature: | -40°C to +100°C [-40°F* to + 212°F] |
| Size: | 3/8" |
| Braiding: | 2 Wire (Double) |
| ID: | 9.3mm Minimum 10.1mm Maximum |
| OD: | 19.7mm |
| Standards: | SAE100 R2AT; DIN 20022; EN853-2SN |
| Life Cycle: | 10 Years |

Performance Data

| | |
|------------------------------|--|
| Vibration Resistance: | |
| Shock Resistance: | |
| Thermal Resistance: | |
| Corrosion Resistance: | |

Doc Number: DOC-COM0030

Released Date: 19 JULY 2019

Reacton Fire Suppression Ltd

14 Baynes Place, Waterhouse Business Park, Chelmsford Essex, CM1 2QX, U.K

T: 0800 030 6526 E: info@reactonfire.com

W: www.reactonfire.com

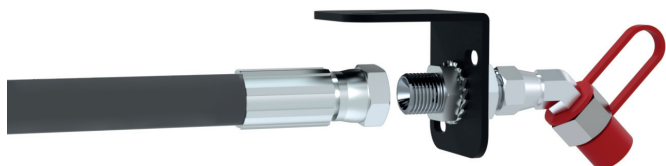
REACTON
FIRE SUPPRESSION

Dimensions



*All dimensions in mm. Tolerance is ± 5.0 mm on the dimensions above.

Principle of Operation / Purpose of use



For optimum performance Reacton recommends to always fit 3/8" Hoses with the 3/8" fittings and adaptors. Equally the it is highly recommended to read Reacton's installation manual.

Design Considerations

Please read the Reacton® installation manual for the equivalent Fire Suppression System you are installing for more details.

Discharge Hoses Lengths (L)

| Length |
|--------|
| 3.00m |
| 2.50m |
| 2.00m |
| 1.50m |
| 1.00m |
| 0.75m |
| 0.50m |
| 0.25m |

Discharge Hose Range

| Part Number | Description |
|---------------|---|
| RE6964 | 3.00m Hose - 3/8" Straight Fem to 3/8" Straight Fem |
| RE6965 | 2.50m Hose - 3/8" Straight Fem to 3/8" Str Fem |
| RE6966 | 2.00m Hose - 3/8" Straight Fem to 3/8" Str Fem |
| RE6967 | 1.50m Hose - 3/8" Straight Fem to 3/8" Str Fem |
| RE6968 | 1.00m Hose - 3/8" Straight Fem to 3/8" Str Fem |
| RE6942 | 0.75m Hose - 3/8" Straight Fem to 3/8" Str Fem |
| RE6969 | 0.50m Hose - 3/8" Straight Fem to 3/8" Str Fem |
| RE6962 | 0.25m Hose - 3/8" Straight Fem to 3/8 Str Fem |

Warranty Validity & Precautions

The warranty is invalidated if the system or part is used under conditions other than those indicated in this datasheet or/and the product has been custom modified.

Stresses above the maximum limits indicated may cause permanent damage to the part or system. Exposure to absolute maximum rating conditions for extended periods may affect reliability that could compromise the system integrity and lead to loss of asset, serious injury or death.

Whilst Reacton® has taken care to ensure the accuracy of the information contained herein it accepts no responsibility for the consequences of any use thereof and reserves the right to change the specification of goods without notice.